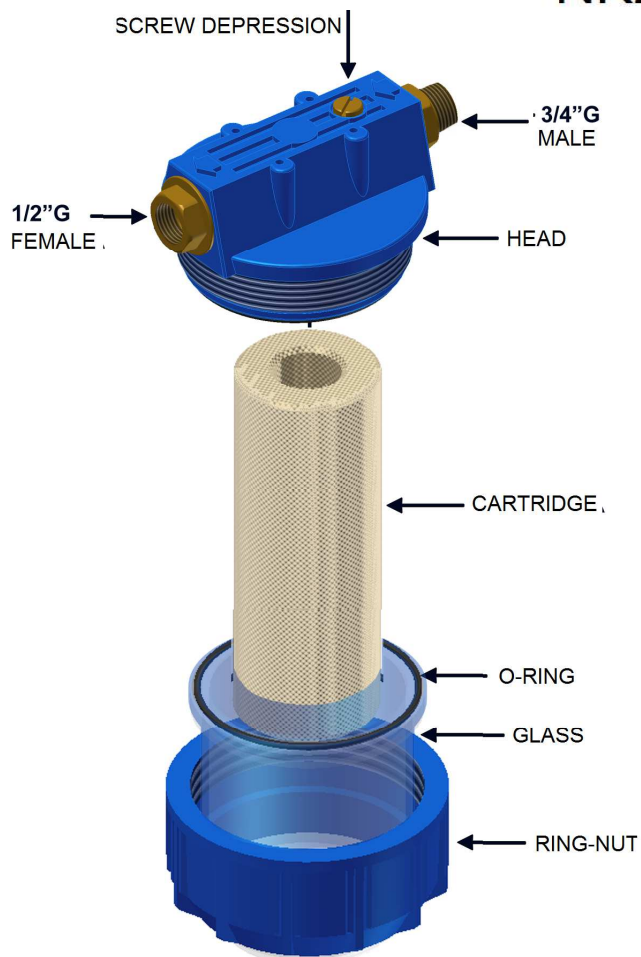


## FILTER NK224



### THE FILTER IS MADE UP:

- 1 head screw with depression
- 1 Ring-nut
- 1 O-Ring
- 1 glass of 9 inches
- series of fittings for the water supply connection

### TECHNICAL CHARACTERISTICS

- Water network connection: 1/2"G  
Filtration capacity  
With cartridge:  
-wirewound 50 micron  
-activated carbon 5 micron

### SUPPLY WATER CHARACTERISTICS

- drinking water
- Temperature min 8°C -- max 25°C
- Pressure min 2 bar, max 8 bar
- Maximum hardness 90°f
- ph 3 - 11

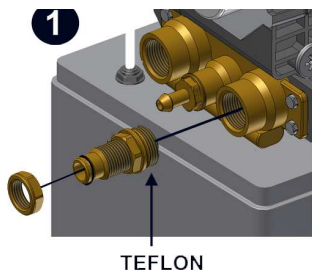
### THE FILTER IS SUITABLE FOR :

the filter can be connected with automatic softeners of series MINI-MAXI and LARGE automatic series with Logix valve with socket 3/4"G:

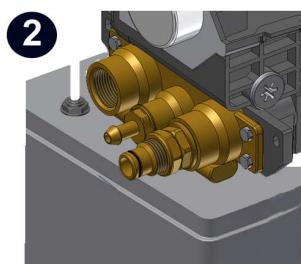
- |        |           |            |
|--------|-----------|------------|
| - MINI | - L24-255 | - L62-255  |
| - MAXI | - L32-255 | - L67-255  |
|        | - L38-255 | - L84-255  |
|        | - L50-255 | - L106-255 |



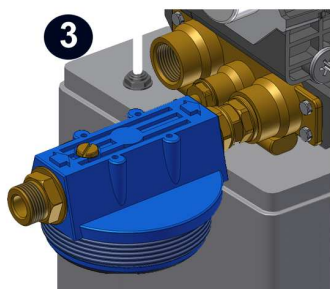
## CONNECTING THE FILTER TO THE AUTOMATIC SOFTENER GIX SERIES



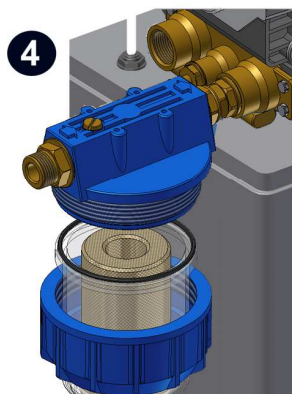
1) Apply teflon to the 3/4"G's thread tap



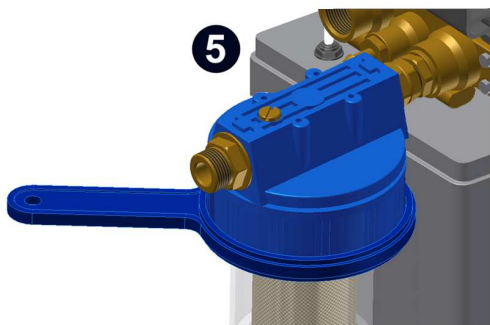
2) Screw the fitting at the manual softeners 's attack tighten the lock nut on the fitting 1/2"G.



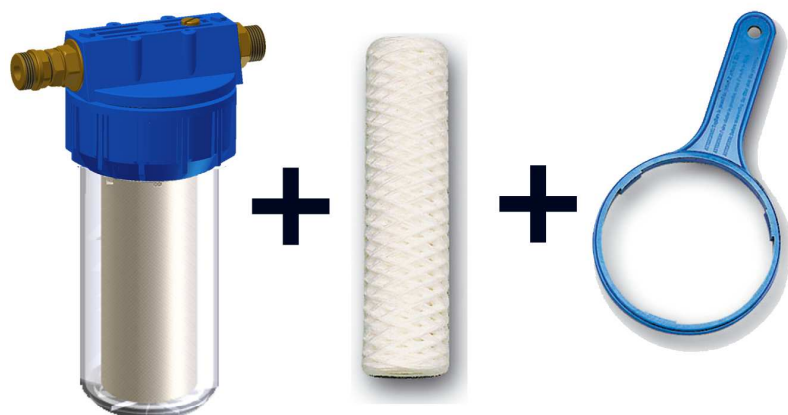
3) Screw the fitter's head and when it's in a horizontal position, tighten the lock nut to secure it.



4) Insert the cartridge into the glass and make sure there is the gasket, screw the ring nut filter's head.



5) Use the wrench to tighten the ring-nut.



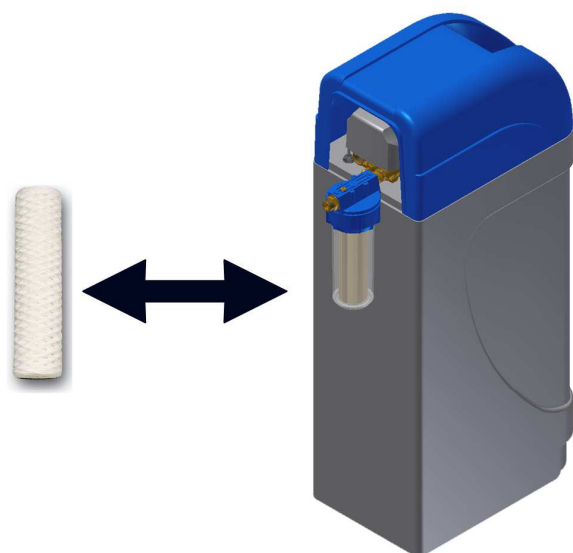
**THE PACKAGE CONTAINS:**

- 1 complete filter
- 1 replacement cartridge
- 1 blocking filter wrench

**MAINTENANCE:**

The maintenance consist in replacing the cartridge.

You must do this at least once every 6 months or whenever the cartridge becomes visibly darker.



**NK224C FILTER  
WITH ACTIVATED CARBON  
CARTRIDGE**

The same filter is available with activated carbon cartridge, that eliminates unpleasant odors and flavors and also ensures a greater filtration also retaining the particles with a size of 5 microns



**ACTIVATED CARBON CARTRIDGE**

**PRODUCT CODE:**

- NK224  
With cartridge filter wrapped
- NK224C  
With activated carbon cartridge