

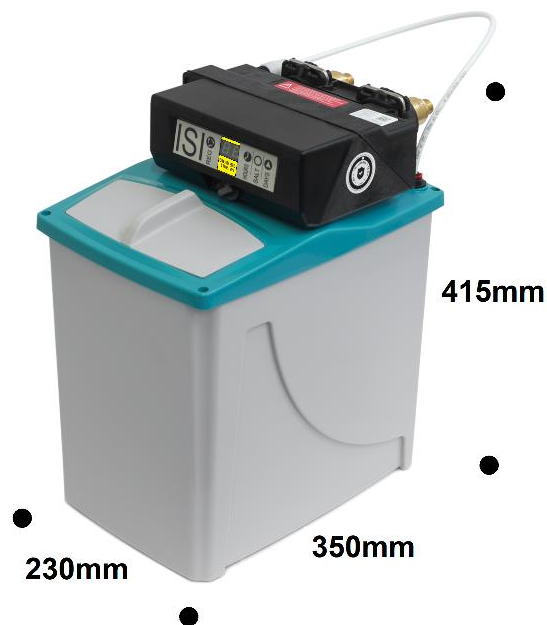
## AUTOMATIC WATER SOFTENER CHRONOMETRIC ISI5

### TECHNICAL FEATURES

|                                      |          |                  |
|--------------------------------------|----------|------------------|
| Weight                               |          | 11 kg            |
| Power supply                         |          | 230V 50/60 Hz    |
|                                      | optional | 120V 60 Hz       |
| Max flow rate suggested              |          | 1500 l/h         |
| Room temperature                     |          | Min 4°C Max 35°C |
| Absorbed power                       |          | 6 W              |
| Salt quantity for regeneration cycle |          | 0.6 kg           |
| Salt refill                          |          | 10 kg            |

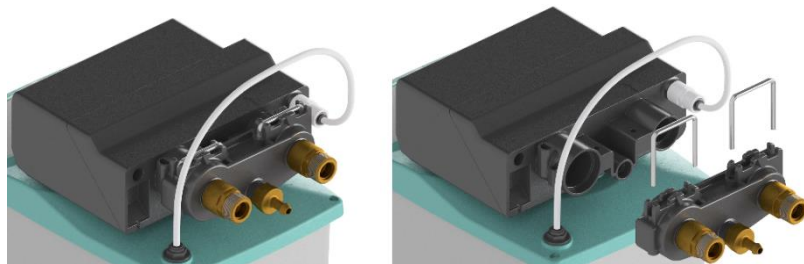
### THE PACKAGING CONTAINS

- 1 Chronometric valve Autotrol 368
- 1 Brine tank
- 1 Vessel 5 litres with 3.5 litres cationic resins adapt for softening
- 1 Instruction manual
- 3 Metres of unloading pipe
- 1 Overflow curved union joint
- 1 Set of joints for water network connection
- 1 Grid



### REMOVABLE IDRIC CONNECTION

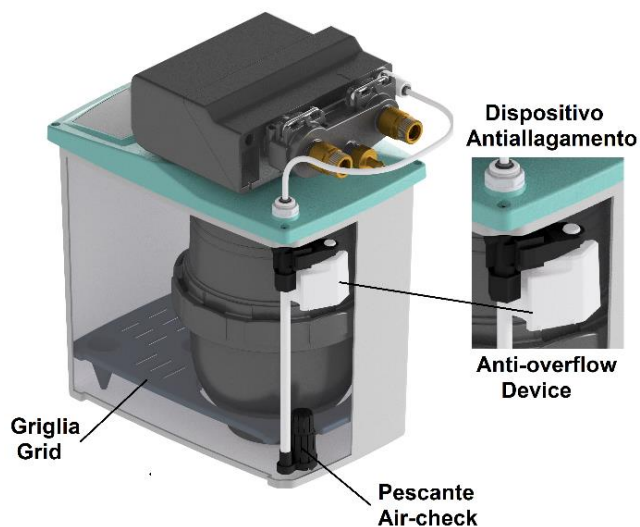
The water connection are removable from the valve body





### INFEEED WATER FEATURES

- Feed water must be:
- Drinkable and clean (SDI 1)
- Temperature must be between 6°C and 25°C
- Infeed water pressure Min 2 bar Max 8 bar
- Hardness must be below 900 ppm CaCO<sub>3</sub> (90°f)



| LITRES OF SOFT WATER BASED ON WATER HARDNESS |             |            |            |            |            |                                       |
|--|-------------|------------|------------|------------|------------|---------------------------------------|
| °f   | 20          | 30         | 40         | 50         | 60         | Cyclic Capacity<br>m <sup>3</sup> .°f |
| °d   | 11          | 16         | 22         | 28         | 33         |                                       |
| ppm CaCO <sub>3</sub>                        | 200         | 300        | 400        | 500        | 600        |                                       |
| <b>ISI5</b>                                  | <b>1050</b> | <b>700</b> | <b>525</b> | <b>420</b> | <b>350</b> | <b>21.0</b>                           |

